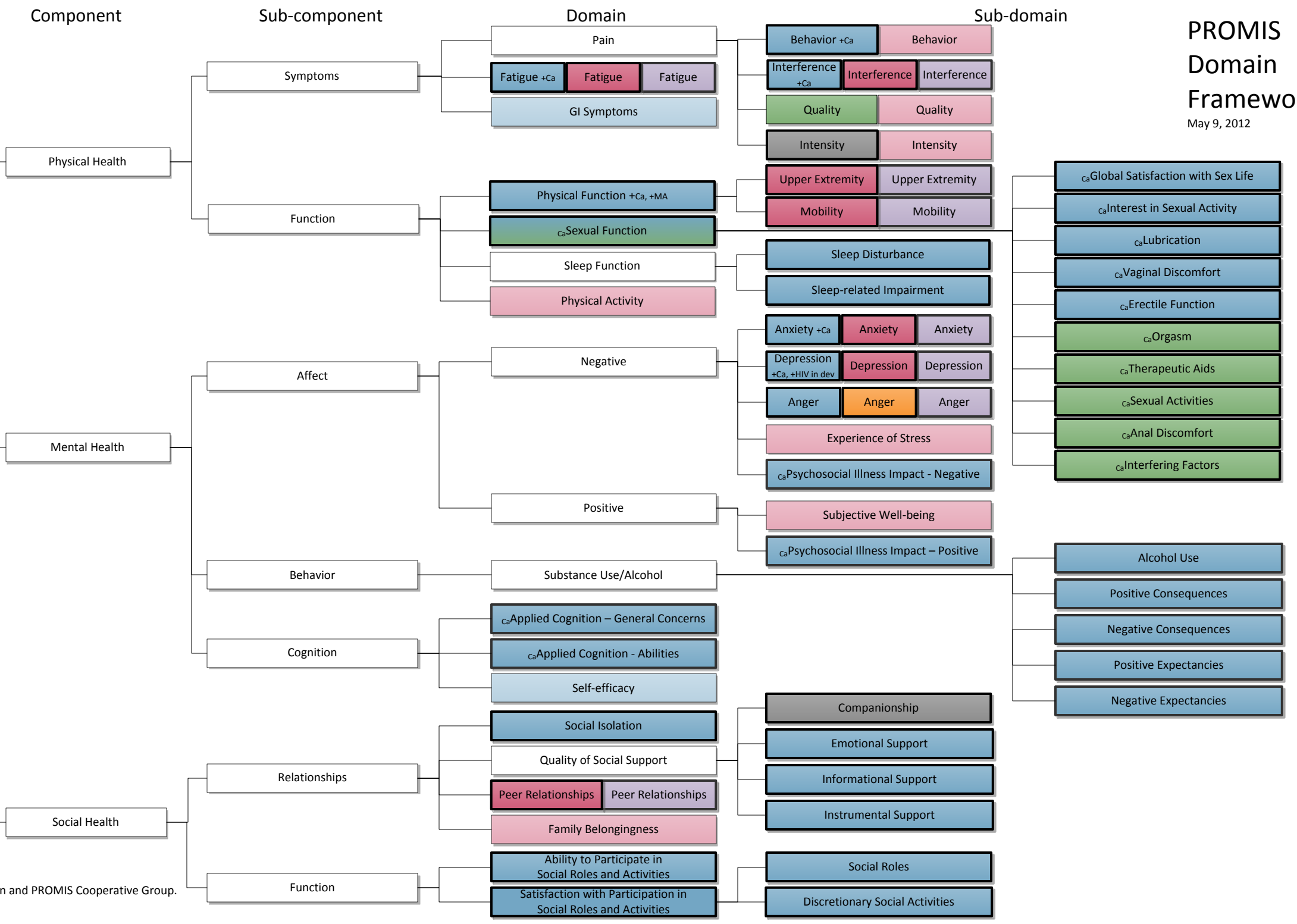
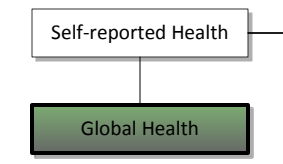


Item Bank - Adult
Calibrated Scale - Adult
Item Pool - Adult
Bank in Development - Adult
Item Bank - Pediatric
Calibrated Scale - Pediatric
Bank in Development - Peds
Item Bank - Parent Proxy

Subscripts following a + indicate bank variations for specified subgroups. Ca = Cancer, MA = Mobility Aids, HIV. A subscript before the bank name indicates the bank was developed in this population only.

A heavy dark border indicates this instrument is currently available in Assessment Center.

Global Health includes 2 calibrated scales and 2 uncalibrated pool items.



PROMIS Domain Framework

May 9, 2012